

5.22 Acres

Former Car Dealership



SITE OVERVIEW

- Adjacent to the I-95/I-93 interchange, the busiest interchange in New England at approximately 300,000 ADT, which extends the draw of this location.
- Excellent visibility from I-95 and heavily traveled Washington St.
- Just 12 minutes to Downtown Boston (non-rush hour)
- Woburn enjoys ample Daytime Population and a strong residential base.
- Zoning: B-1 Business Interstate
- Utilities: Natural Gas & Town Sewer and Water

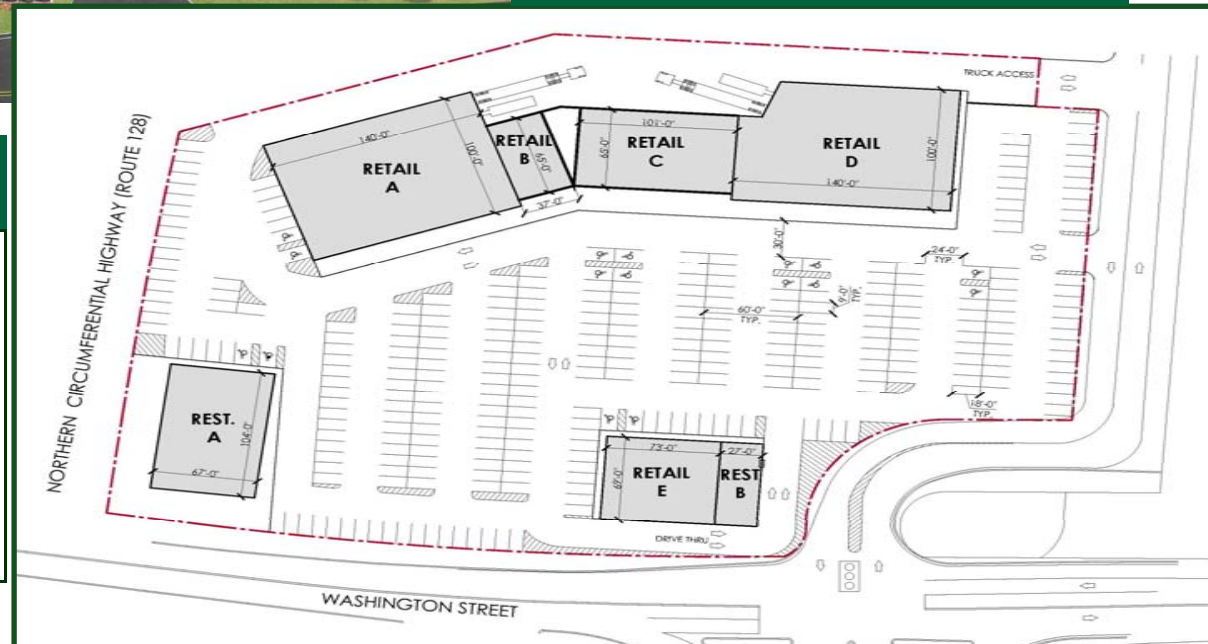


SITE PLAN



AVAILABLE
5.22 Acres

ALTERNATIVE CONCEPTUAL PLAN



DEMOGRAPHICS

Population Average HHI Employees

3 Miles	100,084	\$169,681	82,023
5 Miles	216,929	\$189,820	153,793
7 Miles	512,976	\$186,026	269,563
10 Miles	1,213,920	\$172,666	639,540