

# FOR LEASE 1,700+/- SF

1st Class Retail Space

- New mixed use development on the busiest block in Downtown Melrose.
- Front on busy Main St. next to CVS and near great restaurants like Turner Fisheries and Stearns & Hill.
- Rear exit onto best parking in the City and Shaw's Supermarket.

## DEMOGRAPHICS:

### Population

1 mile	23,063
2 mile	71,676
3 mile	163,040
5 mile	476,604

### Average HH Income

1 mile	\$128,608
2 mile	\$115,680
3 mile	\$103,323
5 mile	\$104,075

### Daytime Work Population

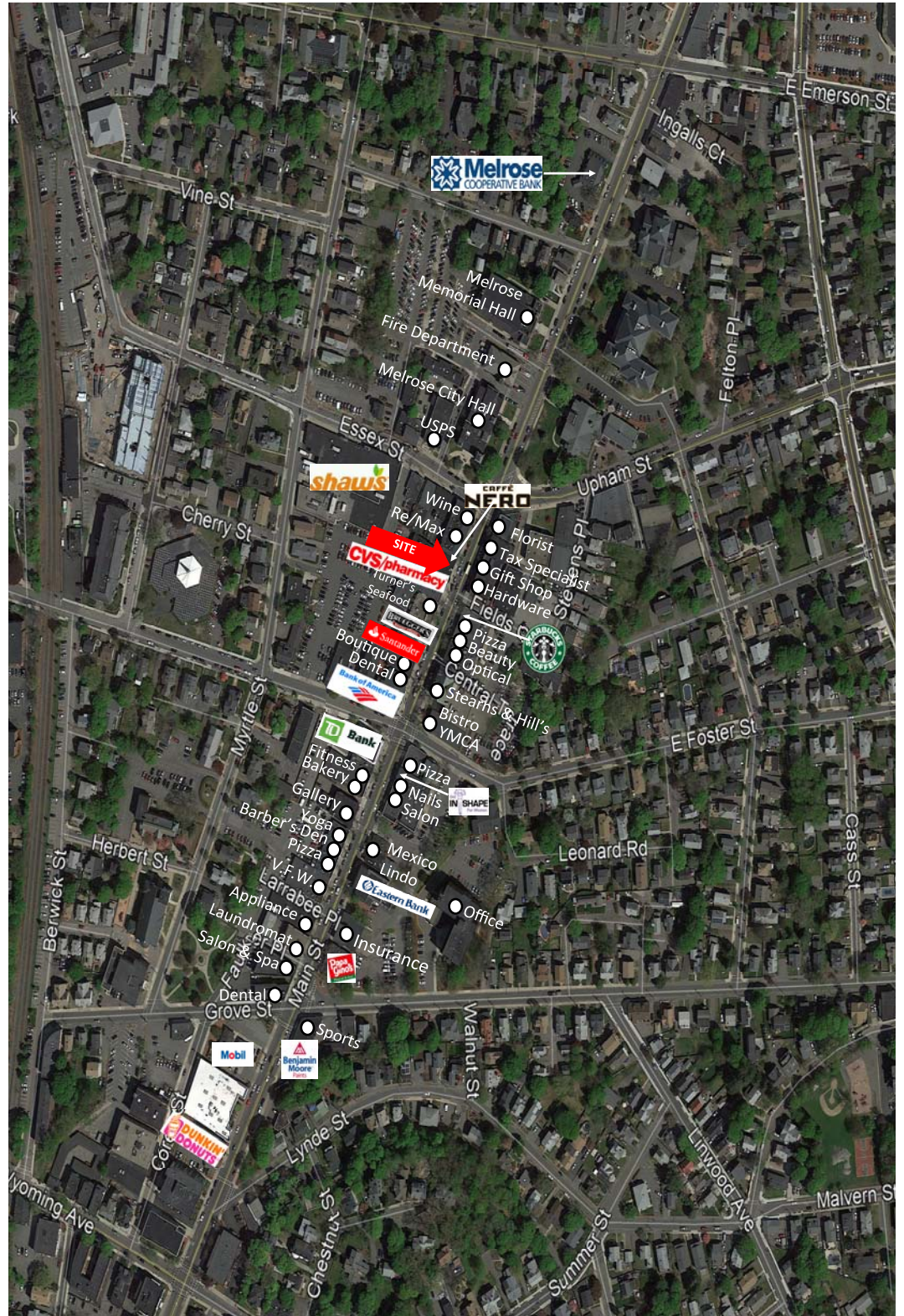
1 mile	8,146
2 mile	17,558
3 mile	44,626
5 mile	180,712

## CONTACT

John Dennis  
781-396-5400  
jd@cra-boston.com

# Melrose, Massachusetts

530 MAIN STREET



**CRA** Corporate Realty Advisors

92 High Street, Suite One  
Medford, Massachusetts 02155  
Tel. 781.396.5400  
Fax 781.396.0888

**FOR LEASE**

**1,700+/- SF**

**1st Class Retail Space**

**Melrose, Massachusetts**

**530 MAIN STREET**



**CONTACT**

**John Dennis**

**781-396-5400**

**jd@cra-boston.com**

**CRA** **Corporate Realty Advisors**

92 High Street, Suite One  
Medford, Massachusetts 02155  
Tel. 781.396.5400  
Fax 781.396.0888

Information set forth is from sources we deem reliable and is subject to prior sales, lease, withdrawal without notice or change in prices and conditions. No representation is made as to the accuracy of any information furnished.